



CAPABILITY STATEMENT

EMF Group
2025

OVERVIEW

EMF Group is a locally owned and operated maintenance and project company providing consultancy, delivery, maintenance, and project services to the mining, power generation and infrastructure sectors.

Established in 2016, EMF Group main office and workshop is in Muswellbrook NSW and operates within proximity to customers to ensure accessibility, local knowledge and support.

EMF Group is a specialist maintenance provider and offers a full maintenance and operations service.

We are focused on ensuring clients' assets are maintained and operated to the highest standard to ensure safe, efficient and reliable output. EMF Group delivers these services through a range of commercial models to suit the size and complexity of the offering.

Our knowledge in operations and maintenance is diverse and includes a variety of commodities and asset classes. EMF Group prides itself on offering solutions tailored to the unique requirements of our clients.



Key Locations:

- BHP - Mt Arthur
- MACH Energy - Mt Pleasant
- Bengalla Coal
- Agri Terminal - Newcastle
- Muswellbrook Council
- Dartbrook Mine



OUR CAPABILITIES

ELECTRICAL AND INSTRUMENTATION

Our services include:

- Greenfield and brownfield installations
- HV & LV cable installation
- Cable ladder and tray installations
- Switchgear and control systems
- Lighting, power systems and earthing
- Ducted and split-system air-conditioning installations and maintenance.
- Data communications
- Pre, wet, dry and load commissioning
- Testing & tagging
- Safety inspections
- Motor control center's
- Instrumentation
- Hazardous area installation and upgrades
- Installation, inspections, commissioning, and calibration of instrumentation



SHUTDOWN MAINTENANCE

EMF Group operates experienced shutdown departments within Hunter Valley New South Wales. Having regularly serviced major clients BHP, MACH Energy, Bengalla, Dartbrook and Newcastle Agri Terminal in the maintenance, repair and replacement of all components associated with Mine and Port Materials Handling Infrastructure.

EMF Group can offer clients the unique service of complete due diligence when planning shutdowns. Critical aspects central to safely meeting demanding timeframes include assessments of physical access, crane requirements, scaffolding, guarding and pre-works. EMF Group can respond quickly to client needs and mobilise resources accordingly.

MAINTENANCE AND PROJECT SERVICES

- Provision of long-term and short-term labor hire across all disciplines
- Routine maintenance services
- Conveyor and surge bin maintenance services
- Assistance with teams or individuals for emergencies or planned shutdowns.
- Minor capital works
- CHPP Plant Upgrades and Optimisation
- Pumping Stations and Transfer Pipelines
- Water & Wastewater Treatment Plants

FABRICATION

Our Muswellbrook based maintenance facilities provides minor fabrication services to support the long-term delivery of our customers' projects in the region. Our facilities are supported by a network of fabrication contractors throughout Hunter Valley and Newcastle, managed for quality and delivery schedule by our dedicated team.

- Walkways
- Platforms
- Ladders & cages
- Stairways & handrails
- Conveyor elements
- Structural strengthening gussets, braces, and beams
- Switchboard manufacture
- Offshore Fabrication

EMF Group also offer offshore capabilities in heavy plate work, piping, and large-scale fabrication from our preferred partners in Thailand offering sea logistics and transportation from port to site within Australia.



OUR PEOPLE

Jason
Anderson
Director

Jason has been an influential figure in the construction and maintenance industry for over 30 years and is dedicated to maintaining strong client relationships and has established a sound reputation within the industry and beyond.

He has held senior management position for over 20 years, Jason has a sound understanding of project management systems such as finance, scheduling, project controls, progress reporting, quality assurance, occupational health, safety, environment & industrial relations.

Jason founded EMF Group alongside Grant Anderson in 2016 bringing with him a wealth of senior management experience and construction expertise in coal, utilities and renewables.

Jasons career goal is to continue using his skills and experience obtained over several years to provide clients, their projects and key stakeholders a mutually beneficial relationship with a culture that upholds safety as a core value that is in all work undertaken.

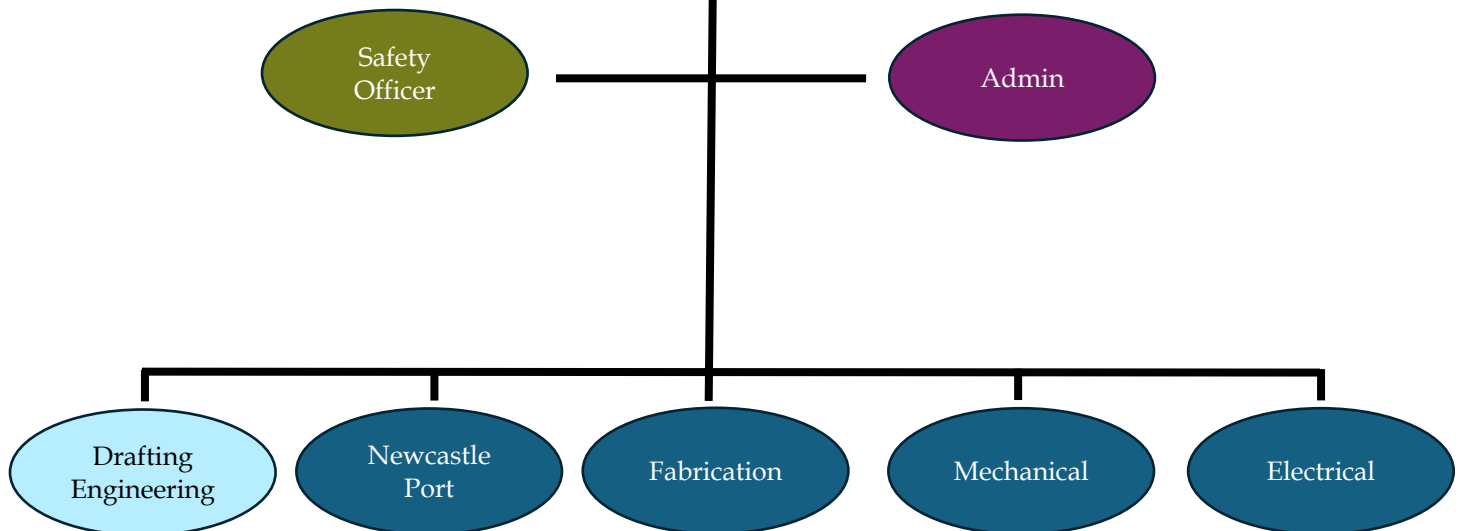
Grant
Anderson
Director

Grant has been involved in various electrical and mechanical construction and maintenance projects within the mining industry for over 30 years. He is now well respected and experienced as a maintenance and project manager.

He is well practiced in health and safety systems, and he is experienced in ensuring all client based occupational health, safety, environmental and community policies are adhered to, maintaining a proactive approach to all aspects.

Grant is well versed in providing technical information for the planning, coordinating and scheduling works associated within the industry across multi-disciplines.

Grant founded EMF Group alongside Jason Anderson in 2016, and successfully continues to deliver an integrated "One Team" solution for clients offering electrical, mechanical and fabrication services to execute all projects.



CONTACT

PHONE: +61 2 6543 0076

Address:

16 COMMON ROAD
MUSWELLBROOK NSW 2333

Postal Address:

PO BOX 148
MUSWELLBROOK NSW 2333

