

wanless

CAPABILITY STATEMENT



Sustainability Through Leadership

Introduction - Dean Wanless, CEO

At Wanless, we believe great partnerships start with shared values. As a proud Australian, family-owned and operated business, we've been recycling long before sustainability became a buzzword. For us, it's always been about doing what's right - for our clients, our people, and the environment we all share.

Over the decades, that simple philosophy has guided how we work: fair pricing, dependable service, and genuine care for the people and businesses we support. Today, those same values underpin our role as a trusted partner to facilities across Australia, from corporate precincts and logistics hubs to retail and industrial estates.

We understand the demands of busy, multi-site operations. Our team delivers scalable, safe and sustainable waste-management solutions that integrate seamlessly into your day-to-day environment. Backed by real-time reporting, responsive logistics and a deep commitment to circular-economy principles, we help our partners meet compliance goals, strengthen ESG performance and enhance workplace sustainability.

Through the Wanless Way - our integrated approach to safety, service and sustainability - every solution we design is grounded in quality, reliability and measurable outcomes. But what truly sets us apart is our people: a team who care as much about your sites, your brand and your impact as you do. Together, we can make your facilities cleaner, safer and more sustainable, for today, and for the generations that follow.

Dean Wanless
Chief Executive Officer



1958

Wanless is founded.

170+

Employees

22

Sites across NSW,
QLD & VIC

200+

Trucks

6

Business units in the
Wanless Group

Experience Matters



The Wanless Group



wanless



resource
ENVIRO SOLUTIONS

Wskips

wanless
RECYCLING PARKS

Windigenous



Vision & Values

Our Mission

To create a better environment and a sustainable future - for our customers, our communities, and our planet.

Our Vision

To be Australia's most trusted resource recovery partner, by empowering our team to safely deliver a premium customer experience for a sustainable future.

Our Values

- Safety First: Everyone deserves to go home safe. Safety guides every decision we make.
- Integrity: We act honestly and transparently with our customers, community and each other.
- Stronger Together: We are 'Wan' Team. We listen, support and grow together to make a difference.
- Innovation: We challenge convention to create smarter, cleaner solutions.
- Sustainability: Environmental stewardship is embedded in everything we do.

Our Sustainability Vision

Sustainability is not a buzzword — it's our core business model.

Wanless drives environmental leadership through:

- Real-time waste performance analytics
- Continuous improvement of our fleet, fuels and infrastructure
- Education, reporting and tools to help customers achieve measurable recovery targets
- Repurposing waste into valuable resources across organics, metals, and construction materials

Accountability Through Actions

Wanless has designed a roadmap that will enable its primary sustainability drivers to be visualised. Our action steps are as follows:

1. Visibility Project – creation of an integrated business key performance value dashboard reporting system.
2. Vehicle CORE Systems – development and deployment of the live data to the fleet.
3. Waste yields – deployment of load cell weighing technology across the waste collection fleet.
4. Analytical – development of dynamic analytical algorithms to enable quantification of fleet net performance, measuring and evaluating routes, fuel consumption, journey time duration, client density, waste yields.
5. Customer training – creation of reporting paradigms that will inform customers of their net waste management performance against specific benchmark values.



Our Culture

*In everything we do we are committed to putting safety first. It's the **Wanless Way**.*



The Wanless Way

Our integrated management system - known as The Wanless Way - underpins how we deliver safe, reliable, and sustainable services for our customers and communities.

Key Focus Areas

- **People:** We invest in training, values, and behaviours that empower our teams to deliver on our service promise.
- **Rules:** Our policies and procedures guide consistent, high-quality, and compliant operations.
- **Technology:** Tools like our CORE system enable us to monitor performance, safety, and compliance in real time.

Safety First is not just a policy; it's embedded into our culture at every level.

Wanless Way System

Wanless Way is an integrated management system, encompassing all aspects of the Wanless business and is the vehicle through which Wanless Waste management will achieve its strategic vision and policy objectives.

Our system is technology independent and not based on a singular or fixed information technology platform. The Wanless Way System specifically encompasses all Wanless operations, services, and functions.

Contract Management & Supervision

We assign a dedicated contract team, led by a National Sales Manager and supported by local managers, to oversee delivery, risk management, and performance monitoring.

Key commitments include:

- Adequate resourcing of personnel and equipment
- Transparent communication and collaboration with clients
- Clear roles and responsibilities within the contract team
- Shared goals for cost efficiency, schedule performance, and service excellence

Our approach fosters a cooperative, solutions-focused partnership — ensuring high service standards and aligned outcomes throughout the contract.

Innovation

Sydney Recycling Park

The Wanless, Sydney Recycling Park is located 56km West of Sydney's CBD and is based on 11 hectares in the idyllic Kemps Creek area. The S.R.P. accepts inert waste from Sydney's Commercial, Industrial and Demolition markets.

220K

Tonnes of waste
we can process
per annum

85%

Approx of
incoming material
diverted from
landfill



We understand that whilst waste avoidance is the ideal solution there are always going to be residual inert wastes that need a disposal destination in Sydney, where waste is handled in an environmentally responsible manner with resource recovery and re-use at the forefront of its operations.

To provide this assurance to our customers, we strictly adhere to local legislation and EPA guidelines managing our facility to the highest workplace safety and environmental standards; currently operating two active engineered landfill cells in the southern section.

Through innovative and sustainable practices Sydney Recycling Park is committed to reducing waste from landfill through an advanced technology sorting process whilst protecting the environment in which our facility operates.

Wanless is currently developing the Wanless Recycling Park (WRP) which will bring innovation in waste avoidance from landfill and deliver best practice while creating a better environment.

Our Capabilities

*Locally based. Nationally backed.
Ready to support customers nationwide.*

Wanless has the right people, the right fleet, and the right infrastructure to service complex, high-traffic venues across Sydney, Newcastle, the Central Coast and regional NSW. Our capability is proven across major infrastructure projects, large-scale events, and daily high-volume waste generating environments.

People & Resources

Wanless maintains a strong Sydney-based operational footprint with:

- 170+ staff, including site supervisors, drivers, coordinators
- Localised fleet (rear-lift, hook-lift, tight-access vehicles <4.3m)
- Kemps Creek-based Sydney Recycling Park (220,000t capacity)
- Smithfield & Botany transfer hubs for rapid deployment
- 4G Metals facility at Seven Hills for secure metal recycling

Our people operate under the WANLESS WAY integrated HSEQ system. A dedicated Account Manager and Supplier Representative will oversee contract delivery and engage with your representatives to ensure responsiveness, compliance, and continual improvement.

Skilled, Local Delivery Team

- Sydney-based operations teams, including drivers, supervisors, and service technicians
- Dedicated site support for large-scale events and high-attendance fixtures
- Regular WHS and environmental training in accordance with ISO standards
- Dedicated mobilisation teams for new contracts and major events
- Proven leadership team with experience in large projects, major events and complex delivery.
- Wanless team members operate under our WANLESS WAY integrated HSEQ system, and are equipped with the tools and information to deliver safe, responsive, and high-performing services.

Waste, Recycling & Resource Recovery

- Multi-stream bin provision and management (General Waste, Organics, Cardboard, CDS, Glass, Commingled)
- Large-scale projects, event and venue waste coordination (e.g. Royal Easter Show)
- Contamination minimisation and waste education
- Support for circular economy outcomes
- Licensed resource recovery facility: Sydney Recycling Park

Data, Reporting & Customer Intelligence

- Diversion rate tracking and waste analytics
- Site-specific benchmarking and reporting
- Real-time tracking and automated reporting via the Wanless CORE platform
- Monthly reports aligned to sustainability KPIs

Site & Event Support

- End-to-end site mobilisation programs and risk-managed delivery
- Rapid response, dedicated onsite teams
- Safety-first culture through WANLESS WAY systems
- Collaboration with stakeholders, vendors and partner contractors

Environmental Innovation

- Operation of Sydney Recycling Park and other licensed resource recovery facilities
- Development of new recycling and repurposing methods for inert waste, metals, soils, organics
- Support for government sustainability targets and education programs
- Circular economy strategy support
- Custom signage, education and behavioural campaigns
- Smart bin tech, RFID, load tracking

Capabilities Cont...

Specialist Fleet & Smart Equipment

Our fleet is GPS-tracked, optimised through CORE, and maintained to the highest environmental and safety standards. Localised fleet includes:

- Front lift and rear lift trucks for high-frequency general waste and recyclables
- Hook trucks for bulk and high-volume servicing
- Vehicles capable of tight-access navigation within heritage and inner-city venues like SCG
- Rapid-response utility vehicles for on-call or overflow support during large events

Smart tech-enabled services:

- Bin tagging and load weighing
- iPad-based photographic servicing for safe placement and obstruction avoidance
- Real-time bin collection logging
- Contamination detection and corrective reporting

Depot & Infrastructure Support

Our operational base is well-positioned to support all NSW locations.

Key sites:

- Sydney Recycling Park – Kemps Creek (56km west of Sydney CBD):
 - Accepts and processes over 220,000 tonnes annually
 - Dedicated sorting and recycling infrastructure for commercial and event waste
 - Licensed to handle inert waste, organics, and recyclable materials
 - Active engineered landfill cells (southern section)
- Smithfield & Botany Resource Recovery Centres:
 - Strategically located to service CBD, inner-west and Eastern Suburbs projects and venues.
- Seven Hills (4G Metals Depot):
 - Reputable metal recycling facility, supporting secure and traceable processing of bulk recoverable waste
- Newcastle depot:
 - Operates as part of an integrated network, providing fleet, bin assets, maintenance facilities, and skilled personnel to ensure service continuity, surge capacity for major events, and rapid response

With these depots and resources, Wanless can mobilise efficiently, reduce haulage time, and process material close to source — minimising emissions, costs, and delays.

Contract Support Structure

- Dedicated Account Manager for contract management
- Local branch and depot managers with decision-making authority
- Integration with partner contractors (cleaners, security, etc)
- KPI-driven performance management and regular service review meetings

Proven Experience in Complex Commercial Settings

We are a trusted partner for multi-stream waste services in dynamic, high-density and logistically challenging environments.

Recent Case Studies Include:

- **Sydney Royal Easter Show (800,000+ attendees):** End-to-end waste delivery with six-stream recycling model, in partnership with QuayClean.
- **Sydney Showgrounds:** Long-term venue partnership providing permanent bin infrastructure, CDS support, and live event mobilisation.
- **Snackbrands:** Tailored daily waste services with diversion of organics, general and packaging waste.



Policy Alignment

Wanless aligns with the Australian gov national and state frameworks:

- **National Waste Policy (2019–2030):** Supports the 80% recovery target
- **Recycling and Waste Reduction Act 2020:** Ensures ethical, local waste processing
- **NSW Waste Strategy 2041 & Plastics Action Plan:** Drives landfill reduction, organics recovery, and plastic phase-outs
- **Circular Economy Models:** Actively pursued through stream segregation, local recycling partnerships, and resource repurposing

Wanless supports clients in not only meeting compliance but advancing beyond it - with tools, insights and services that drive positive environmental performance.

Scope of services:

Performance Outcomes

- Real-time data portal (CORE)
- Stream-level data: volumes, destinations, contamination insights
- Dedicated Supplier Representative
- 3-month initial sustainability report with annual ongoing, and/or on-request reporting

Insurances

- Workers Compensation (NSW compliant)
- \$20M Public Liability
- \$10M Product Liability

Legal & Environmental Compliance

- Compliant with POEO Act 1997, WHS laws, and EPA regulations
- Chain of Responsibility trained fleet and staff

WHS Commitment

- Safe Work Method Statements (SWMS) for all operations
- PPE, training, toolbox talks, WHS audits

Waste & Recycling Services

- Rear-lift bin fleet (120L to 1100L)
- Hook bins (6m³–12m³) and 4.5m³ front lift skips
- Height-compliant vehicles for 4.3m ring road and 2.4m spiral ramps

Management Approach

- Newcastle and Sydney-based scheduling and dispatch
- CORE-integrated job tracking, vehicle routing, and issue flagging

Responsible Procurement

- Code of Conduct compliant
- Zero history of unethical or illegal conduct
- Auditable procurement and supply chain controls

Value Add & Innovation

- RFID tracking and smart weighing bins
- Education tools: signage, team briefings, contamination audits
- Transparent material flow mapping (where it goes, how it's reused)
- Compact and baler plant lifecycle support

Reporting

Wanless makes managing single and multiple site contracts simple and easy, understanding the need for customers to have access to a suite of reports that provides a complete view of all waste & recycling activities each month, that clearly demonstrate the effectiveness of our landfill reduction and waste recovery initiatives.

Our monthly reporting provides your business and its stakeholders piece of mind that your collections have been performed in an environmentally responsible manner.

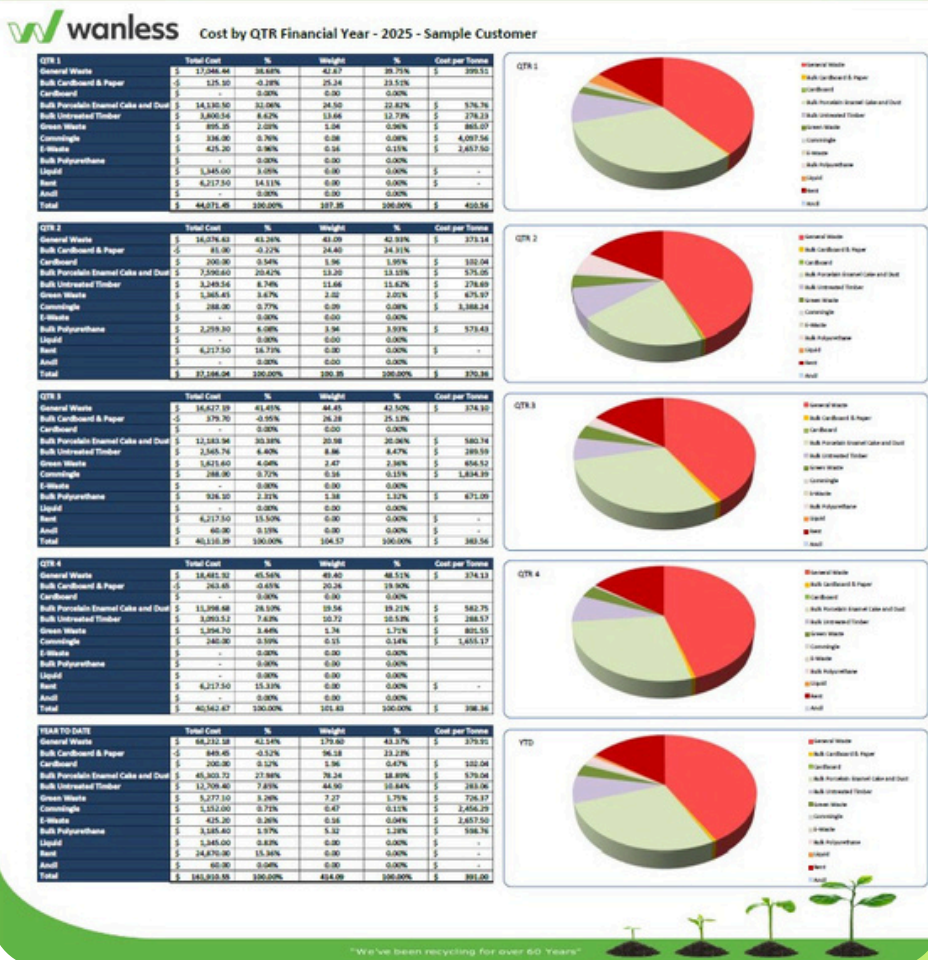
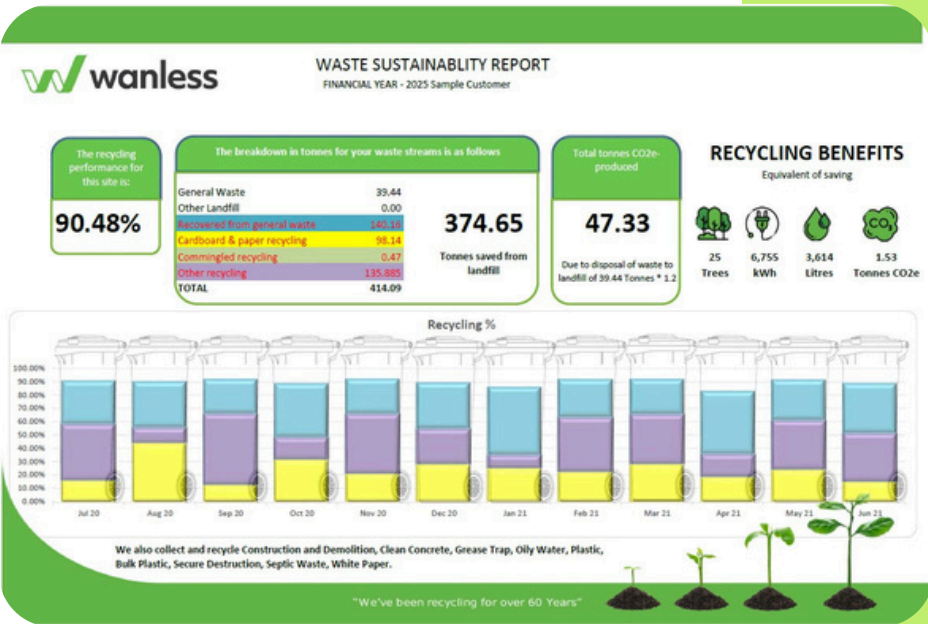
The detail shows the number of collections both scheduled and actual, dollar amounts and detailed descriptions of the bins. We will utilise the monthly report to identify any opportunities for improved recycling and for suggested adjustment to the collection schedule in consultation with you.

The reports will, at a minimum, include information on by category:

- Volume & weight in tonnes
- Number of collections
- Environmental reporting
- Cubic metres collected
- Quarterly summary costs

Wanless Reporting provides:

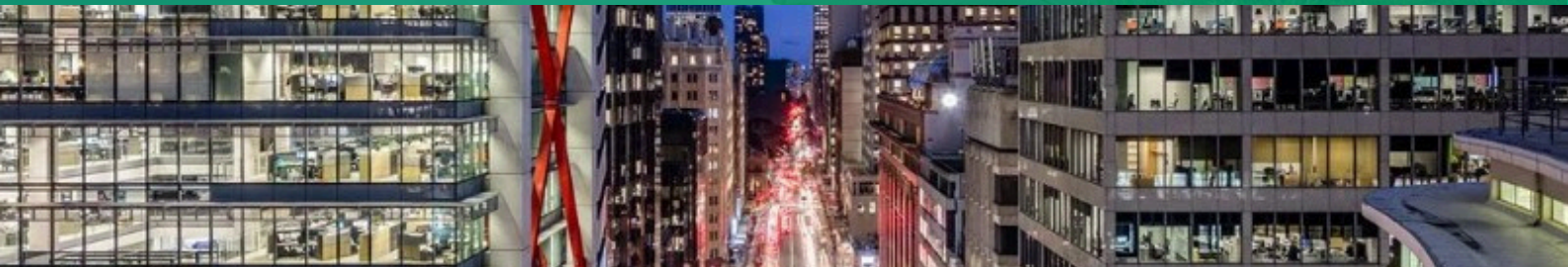
- Consolidated national & multi-site reporting
- Data collection from a live environment
- Track environmental & contract performance
- Provides transparency and visibility across waste, recycling streams and sites



The Wanless CORE

The Wanless CORE system is a modern cloud-based suite of software that functions as a web service with integrated Google mapping, route optimisation and mobile software apps that support a wide variety of waste services.

- CORE is used to provide instruction to Operators (which can be achieved remotely), link to HSEQ documentation, and gain authorisation from Client representatives at the completion of tasks.
- In terms of functionality, CORE is a resource planning tool as well as a collection management system and can be used to schedule and forecast both routine and ad-hoc work tasks.
- The iPad platform enables time and date stamped photo and video records to assist in accurate reporting and invoicing. Through GPS tracking, efficiency-based reports can also be generated to assist in potential innovation and continuous improvement initiatives.
- The iPad platform is used by Wanless field staff and Branch Managers to take photos on each client's site to provide information to the driver of the truck ensuring safety at times.
- The field staff and the Wanless Branch Managers will attend the client site to photograph the area that the Wanless truck needs to access to service the bin/s. The onsite photographs provide the driver with essential information such as the turning circles, overhead wires, reversing issues and any obstacles. The iPad photos are then uploaded to the system and the information is posted to the truck servicing the site to ensure the driver is aware of any access issues.
- Ability to accurately record collection data, enabling accurate invoicing and reporting.
- Real time tracking of resources leading to efficiencies in scheduling.



Implementation

Wanless follows a structured, risk-managed approach to contract mobilisation and service delivery, ensuring a seamless transition and operational readiness from day one.

Initiation

- Site Assessment Form (SEF) completed to define service scope
- Identification of risks, constraints, and special access considerations
- Early engagement with client stakeholders

Planning & Design

- Development of timelines, resourcing, and risk controls
- Integration of customer expectations, site logistics, and safety requirements
- Creation of reporting, communication and HSEQ frameworks

Execution

- Mobilisation of trained personnel, fleet, and equipment
- Real-time monitoring via CORE platform
- Alignment with WANLESS WAY standards for safety and service

Monitoring & Control

- Ongoing performance review against scope, timeline, and KPIs
- Prompt resolution of service variations or issues
- Continuous improvement via feedback loops and data analysis

Community, Culture & Social Responsibility

At Wanless, we believe that sustainability extends beyond the environment. It includes empowering people, supporting communities, and building a better future.

Social Responsibility

We actively engage with local communities through:

- Clean Up Australia partnerships, including staff participation and waste collection support
- Volunteering at local events, sports clubs and fundraising initiatives
- Chamber of Commerce engagement and support for philanthropic causes

Indigenous Commitment

W Indigenous is a majority-owned Indigenous business focused on sustainable waste solutions and caring for Country. We provide employment pathways through direct jobs and Owner Driver opportunities, supporting long-term economic empowerment.

Youth Education Support

Through our Centre for a Waste-Free World, we partner with high schools and QUT students to promote sustainable behaviours. Our programs include:

- Co-designed waste reduction workshops
- Student-led initiatives to identify and address school waste
- Community education to amplify impact



Case Study

2025 SYDNEY ROYAL EASTER SHOW

Wanless Waste provided comprehensive waste management services for Quayclean and the Sydney Showgrounds at the 2025 Sydney Royal Easter Show, delivering end-to-end solutions across waste collection, recycling, and resource recovery. Over a total of 28 days (including bump in and bump out), Wanless supplied, cleaned, and managed approximately 500–700 bins and 7 compactors, handling around 500 tonnes of waste across multiple streams including organics, commingled, cardboard, CDS, e-waste, timber, and general waste.

Despite the complexity of bump-in/out logistics, overnight operations, and the Easter holiday period, Wanless maintained a strong recycling focus, achieving a 91% landfill diversion rate — a 7.5% year-on-year improvement. Key initiatives included tailored vendor training, co-branded sustainability signage, real-time reporting, and stakeholder coordination via dedicated communication channels. The collaboration successfully aligned with Sydney Showground's waste reduction and circular economy goals, delivering both environmental and cost benefits.



91%

Waste diverted from landfill

500

Tonnes of total waste collected over 28 days

700 + 60 + 7

240L bins + 3m front lift bins + onsite compactors



View the client testimonial and Easter Show Case study [HERE](#)

Project Scope

- Type of Services Provided:
 - Waste collection and disposal
 - Recycling and resource recovery
 - Organic waste transport
 - Supply, clean & remove of bins –
 - 240L up to 3m bins. Custom, illustrative labels
 - 7 Compactors
 - Onsite logistics/support - bin install & management, signage, staff training
 - Onsite event waste manager (each night shift)
 - Supply truck & driver each night (up to three rear, front & hooklift) up to 4 team
 - Service interval 11pm – 6am
- Scale & Complexity:
 - Approx 500-700 plastic bins, 50-60 front lift, 7 compactors with 3-5 compactors emptied and replaced per night
 - Total 500 tonne, including bump in and bump out
 - Avg Rear lift 13.6T per night
 - Avg Front lift 6.7T per night
 - trucks & operators 250hours over 12 days incl public holidays
 - 82hrs front lift over 12days
 - 65 compactor movements
 - Waste streams managed - organics, commingled, paper & cardboard, CDS, general waste, e-waste, timber, plastics, dry waste

Challenges & Objectives

- Complexity – bump in and bump out (30 movements on top of usual services just in bump in bump out), additional services added to our normal daily operations
- Trucks operating overnight, extra staff rosters, logistics, planning, coordinating disposal facilities to open especially over easter long weekend. Arrange out of hours access to processing partners
- high foot traffic, tight timeframes
- Objective was to maintain a recycling focus as a priority while providing a seamless guest experience

Approach

- Tailored solutions offered bin audits, staff training, source separation initiatives
- Waste stream separation during truck loading / nightly clearing – yellow & red bins had dedicated trucks & processing partners
- Innovations or value-add services - real-time, daily reporting, co-branded signage, sustainability education videos for internal and external audiences
- Partnerships formed (e.g. with cleaning contractors, event managers)
- Communication and stakeholder management strategies – whatsapp groups for team comms, social media and marketing support
- Created ppt slide illustrating for vendor training on waste streams and end user education. Educating vendors on the 'why' to engage mindfully in their waste management

Outcomes & Impact

Quantitative data:

- 91.06% of waste diverted from landfill
- Increased recycling yoy by 7.51%
- Tonnages collected and recycled
- Cost efficiencies delivered

Qualitative results:

- Client feedback
- Compliance achievements
- Long-term sustainability benefits
- Alignment with Sydney Showgrounds goals (waste reduction, education, circular economy)



Thank You

Thank you for taking the time to consider our waste management proposal. We are confident that our tailored solutions, commitment to sustainability, and focus on service excellence will deliver real value to your business. Should you have any questions or require further information, please don't hesitate to contact us. We look forward to the opportunity to work together.

Wanless Waste Management Pty Ltd

1300 926 537

sales@wanless.com.au

ABN

85600950034

ACN

600950034

Director

Dean Wanless

Registered Address

1-5 Whiting St, Artarmon NSW 2064

Postal Address

PO Box 205, Spit Junction NSW 2088



wanless.com.au